



A NEW FACE TO THE EXTENSION OFFICE:



We are excited to welcome, Kally Jo Felcman, as our new Livestock Program Coordinator! Kally is from Wharton County and has grown up on her family's beef cattle ranch raising and showing cattle, specifically Brahman cattle. She is a recent graduate of Texas A&M University and is now attending Texas Tech University where she is pursuing her Masters. Kally is one that is passionate about the livestock industry, and the youth involved within the industry. If you have questions livestock related, please do not hesitate to reach out to Kally!

[kally.felcman@ag.tamu.edu](mailto:kally.felcman@ag.tamu.edu)

PROTECTING YOUR STOCK AGAINST AN UNWANTED PARASITE:

They may say April showers bring May flowers, but the April showers can also bring an unwanted parasite to your herd. With the recent rain showers, and humidity rising in Southeast Texas, the spread of ringworm in your livestock herd may be a concern!

Ringworms are a highly transmittable fungal parasite, if one animal gets it the chances of another one getting it in your herd is extremely high. *Bos taurus* cattle are more susceptible to the parasite than *Bos indicus* cattle, as well as young show sheep and goats.

Topical fungal medications may be applied to the affected skin sites of the present ringworm. It is always best to contact your Veterinarian to develop a treatment plan for this zoonotic disease. Cleaning and disinfecting your livestock pens is highly recommended to stop the spread of ringworm.



## MANAGEMENT TECHNIQUES THAT INCREASE PROFITABILITY:

1. Have your Vet conduct a yearly breeding soundness examination on your sires.
2. Palpate all females- check breeding data on each animal & remove all non-producers.
3. Maintain moderate body condition on all livestock.
4. Appreciate and use vaccines
5. Deworm, especially in suckling calves (2-4 months in age).
6. Growth Implants.
7. Reduce cost by determining your production unit-cost.



## MINERAL SUPPLEMENTATION FOR SUMMER GRAZING MONTHS:

Minerals are a vital element of livestock nutrition. Hot summer months are quickly approaching, and the nutrient values in pasture lands will decrease. It is pivotal for your herd that you as producer provide mineral supplementation. Cattle who do not receive proper mineral and vitamin nutrition will not grow or reproduce as quickly or efficiently as their well-supplemented counterparts.

Cattle are more likely to be deficient in the following minerals: Phosphorus, Copper, Selenium, Zinc, and Vitamin A while in summer forage conditions. The deficiency can be supplemented by just simply putting out mineral for your herd. Don't loose profit and reproduction time in your herd by mineral deficiency. Click the mineral supplements below to learn more about mineral products to offer your herd!



**Westway**  
FEED PRODUCTS  
Where solutions flow.®





# Educational Opportunities:



**August 7-9, 2023**



**Virtual Ranching 101: Lease & Logic -**  
**July 18, 2023 1pm-2pm**

**Free online training**  
with certification,  
at your own convenience

## Late Night Reads:

Are you one to "research" topics at night on your phone? If so I encourage you to check out these HOT topics in agriculture! Click the icons to learn more.



Lab Grown Meat



Vertical Farming



Decreasing Herd Size

## Contact:

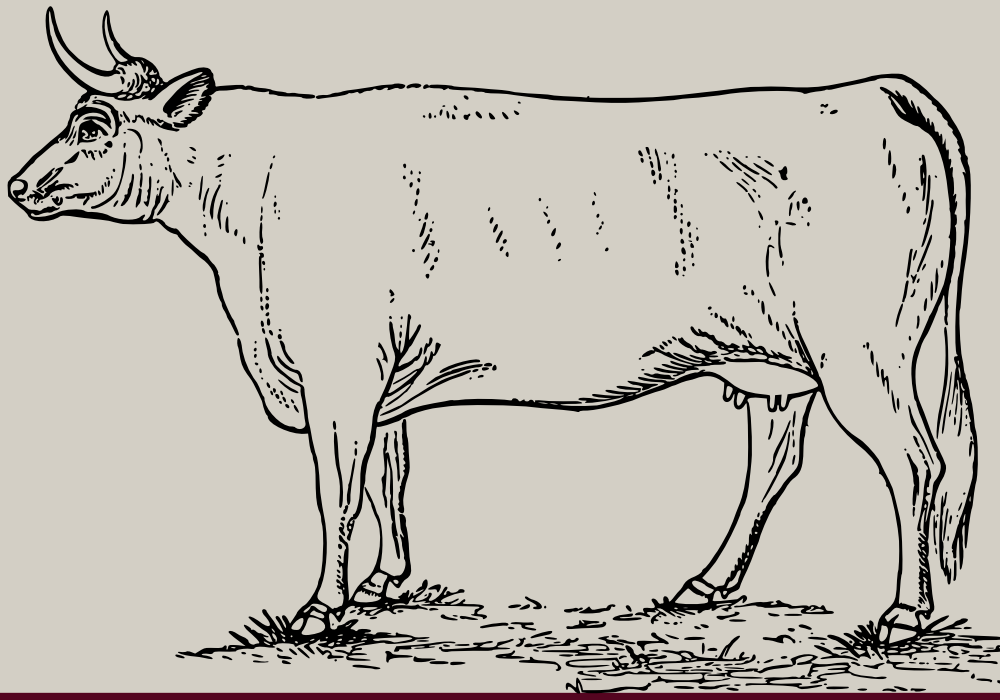


**Kally Jo Felcman**  
Livestock Program Coordinator  
Office #- 281-633-7007  
[kally.felcman@ag.tamu.edu](mailto:kally.felcman@ag.tamu.edu)

**or**

TEXAS A&M **AGRI**LIFE  
EXTENSION Texas A&M AgriLife Extension - Fort Bend County  
Office #- 281-342-3034  
[fort-bend-tx@tamu.edu](mailto:fort-bend-tx@tamu.edu)

TEXAS A&M  
**AGRI**LIFE  
EXTENSION



# We need your input!

**Join our Beef & Forage Committee**

Email [john.few@ag.tamu.edu](mailto:john.few@ag.tamu.edu) or  
[kally.felcman@ag.tamu.edu](mailto:kally.felcman@ag.tamu.edu)

**to learn more and join the committee!**

TEXAS A&M  
AGRI LIFE  
EXTENSION